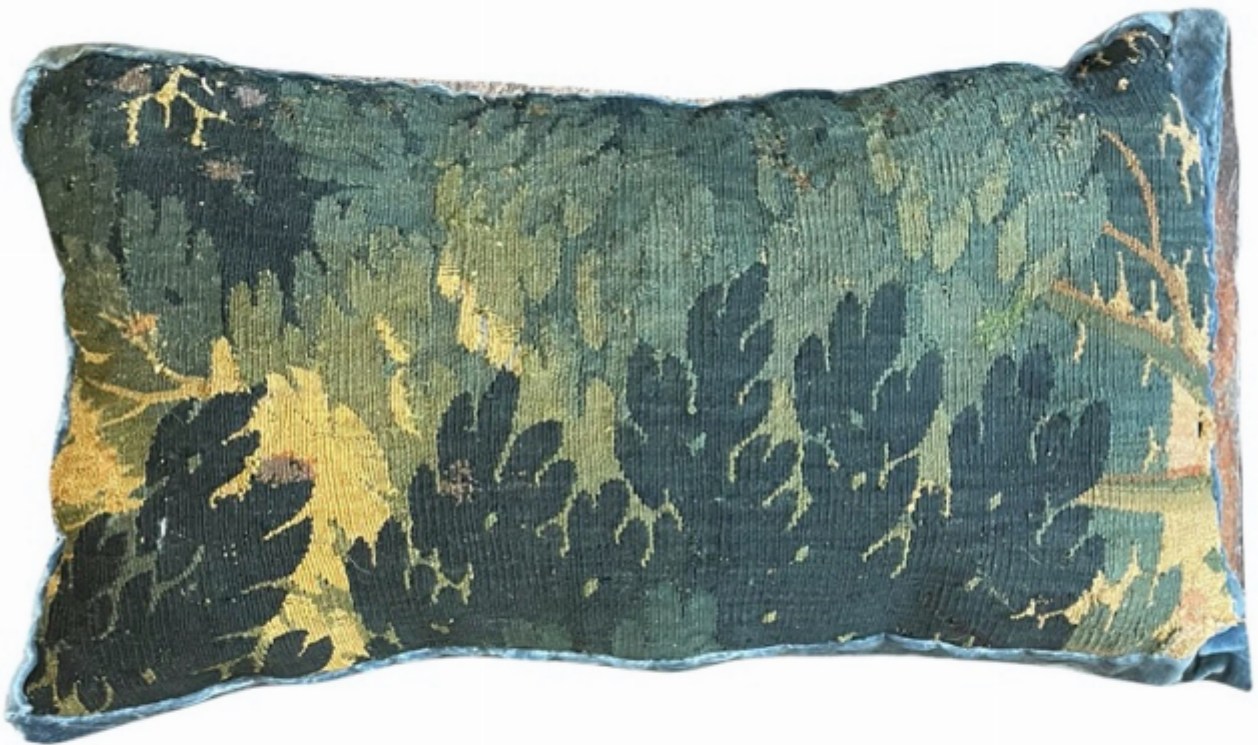


Emmett & White
ANTIQUES & INTERIORS

A large cushion made from 17th century Verdure tapestry fragment, circa 1650

Sold



REF: 4586

Height: 30 cm (11.8")

Width: 60 cm (23.6")

Description

A large cushion made from 17th century Verdure tapestry fragment, circa 1650, with blue velvet backing