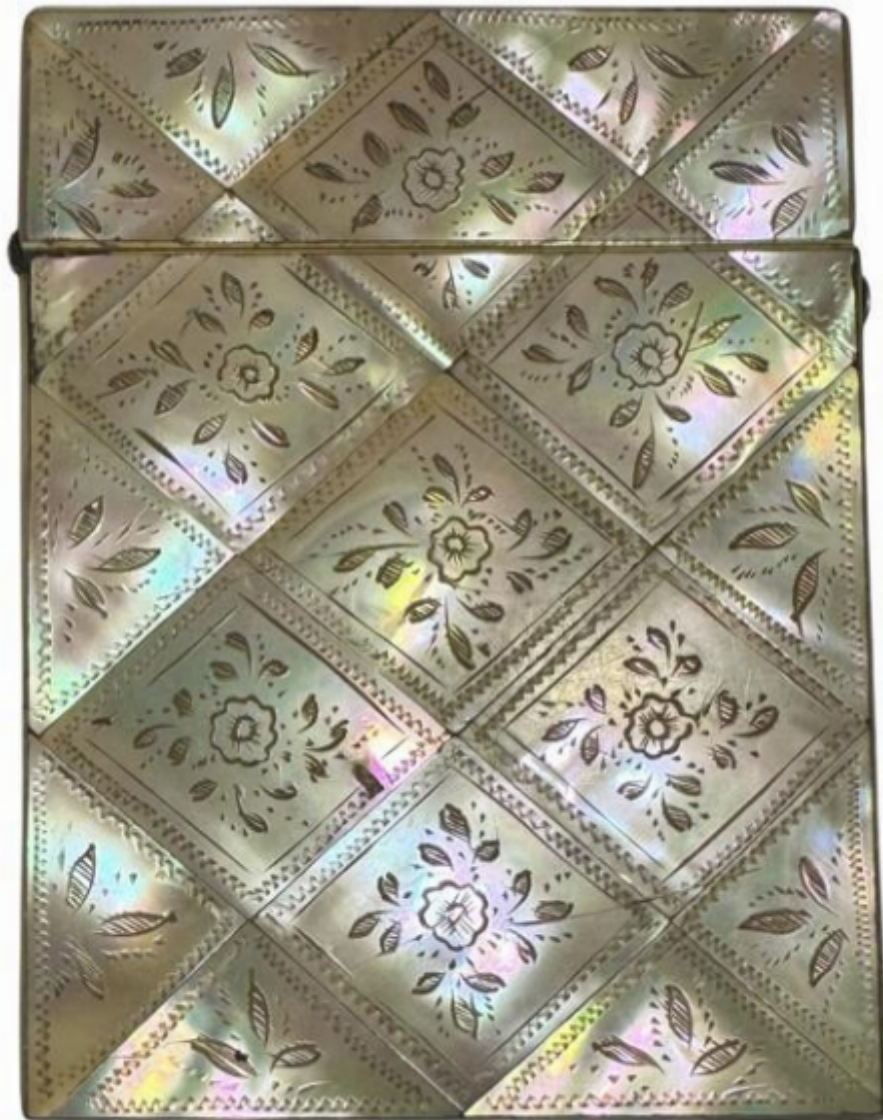


Mother of pearl carte de visite case

Sold



REF: 7171

Height: 10 cm (3.9")

Width: 8 cm (3.1")

Depth: 1 cm (0.4")

Description

A 19th century mother of pearl carte de visite case, circa 1850

Carte de visite cases were small, often ornate containers designed to hold and protect 'cartes de visite' - miniature photographic portraits popular in the mid-19th century. These cases, typically made from leather, wood, gutta-percha, or metal, reflected the Victorian era's appreciation for craftsmanship and personal keepsakes.

Many featured intricate designs, velvet linings, or compartments for multiple photographs. They served both practical and social purposes, allowing individuals to carry portraits of loved ones or exchange likenesses during visits.

As photography became more accessible, these cases symbolised identity, connection, and status, preserving cherished images in an age of growing photographic culture.